



INGRESS BIO
SCIENCE FOR SOIL

ABOUT US

INGRESS BIO IS AN AHMEDABAD-BASED BIOTECHNOLOGY COMPANY DEVELOPING AND PRODUCING MICROBIAL PRODUCTS FOR AGRICULTURAL AND ENVIRONMENTAL APPLICATIONS. OUR VISION IS TO REDUCE THE USAGE OF AGROCHEMICALS BY PROVIDING HIGH-QUALITY, CONSISTENT AND AFFORDABLE ORGANIC INPUTS. WE DEVELOP AND MANUFACTURE TECHNICAL GRADE MYCORRHIZAL BIOFERTILIZER.



MYCORRHIZA BIOFERTILIZER



MYCORRHIZA IS A SYMBIOTIC RELATIONSHIP BETWEEN
PLANT AND FUNGUS

- INCREASES EFFICIENCY OF NUTRIENT AND WATER UPTAKE
- INCREASE TOLERANCE TO BIOTIC AND ABIOTIC STRESS
- INCREASES ROOT ABSORPTION AREA BY UP TO 50 TIMES

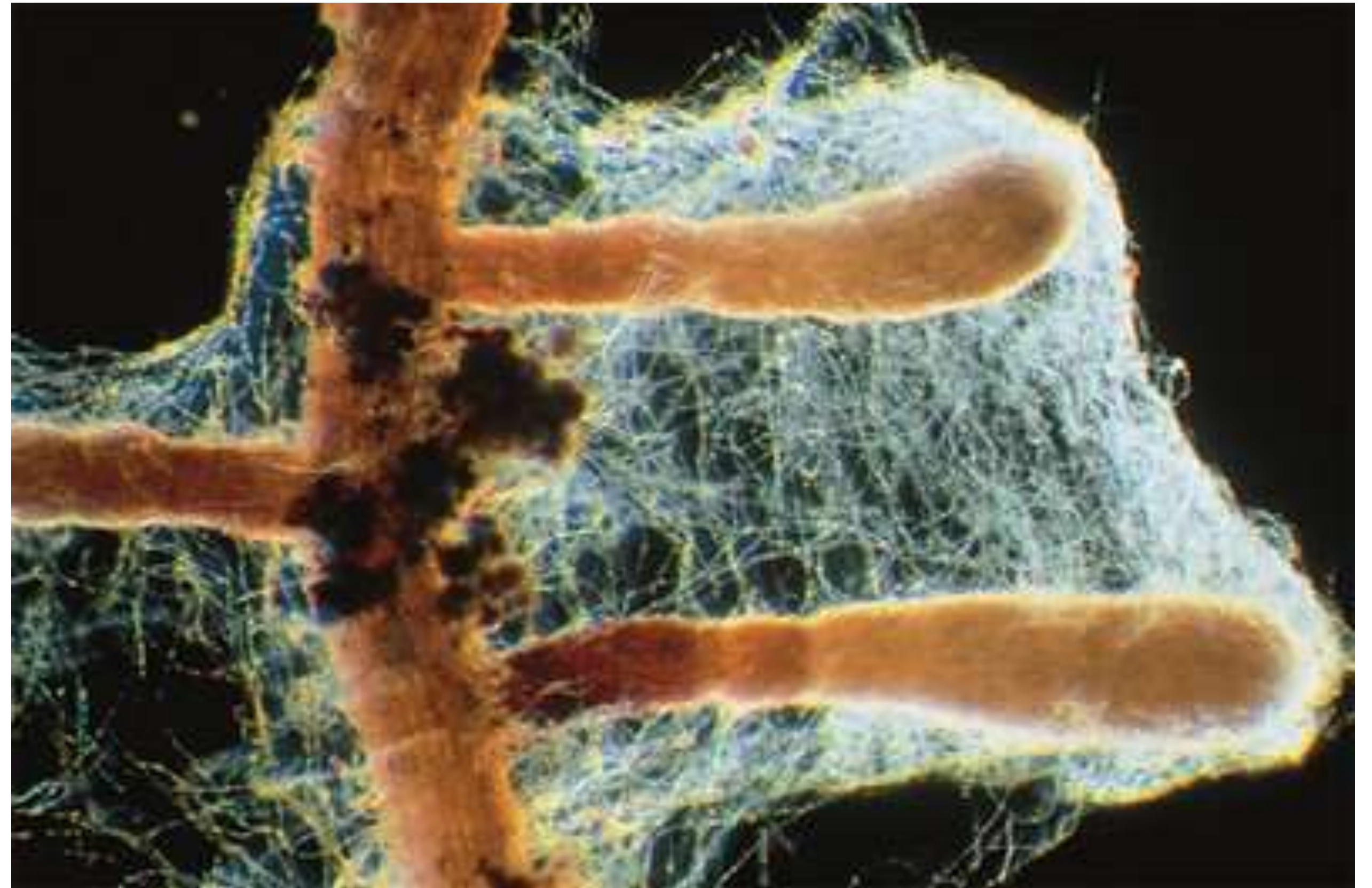
MYCORRHIZA AKA INTERNET OF PLANTS

THE SECRET TO THE RESILIENCE OF THE FORESTS IS THE UNDERGROUND MYCELIAL NETWORK VIA WHICH THE PLANTS COMMUNICATE AND HELP EACH OTHER THRIVE BY SENDING WATER AND NUTRIENTS WHERE THEY ARE REQUIRED. WHEN THE TREES DIE, THE FUNGI HELPS DEGRADE THE TREE BACK TO THE SOIL.

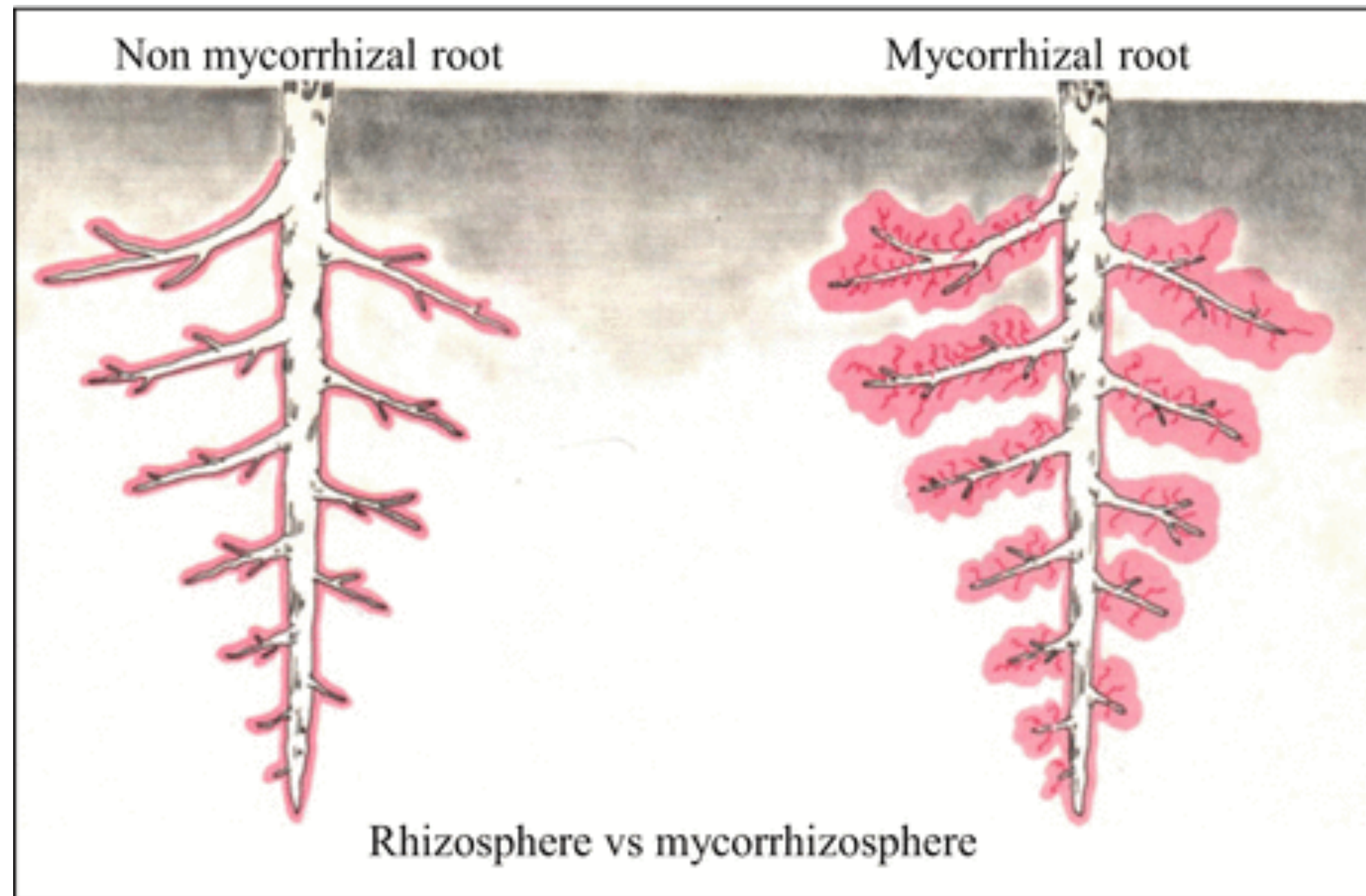


FUNGI AND PLANTS: A MATCH MADE IN HEAVENS

FUNGI AND PLANTS TEAM UP TO SUSTAIN EACH OTHER. THE PLANT ROOTS EXUDATE A SWEET, STARCHY SUBSTANCE THAT FEEDS THE FUNGI, IN EXCHANGE THE FUNGI FEEDS SOLUBLE MINERALS AND WATER TO THE PLANT THROUGH ITS HYPHAE.



WHAT IS MYCORRHIZA?



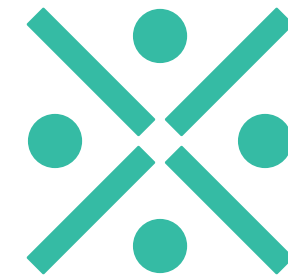
A MYCORRHIZA IS A SYMBIOTIC ASSOCIATION BETWEEN A GREEN PLANT AND A FUNGUS. THE PLANT MAKES ORGANIC MOLECULES SUCH AS SUGARS BY PHOTOSYNTHESIS AND SUPPLIES THEM TO THE FUNGUS, AND THE FUNGUS SUPPLIES TO THE PLANT WATER AND MINERAL NUTRIENTS, SUCH AS PHOSPHORUS, TAKEN FROM THE SOIL.

KEY BENEFITS OF MYCORRHIZA BIOFERTILIZER



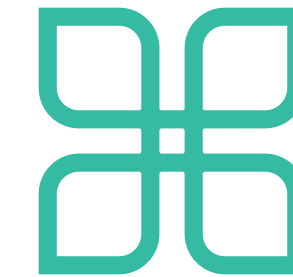
ROOT SYSTEM GROWTH

- SUPPORTS FASTER PLANT ESTABLISHMENT
- ACCESS NUTRIENTS BEYOND ROOT ZONE AND DELIVER THEM TO PLANT VASCULAR NETWORK
- INCREASE ABSORPTION AREA BY 50 TIMES
- INCREASES OVERALL ROOT BIOMASS



NUTRIENT EFFICIENCY

- ABSORB AND ACTIVELY DIRECT NUTRIENTS DIRECTLY TO THE ROOTS
- IMPROVES UTILIZATION OF SOIL NUTRIENTS INCLUDING:
 - NITROGEN
 - PHOSPHORUS
 - POTASSIUM
 - MICRONUTRIENTS



WATER ABSORPTION

- ABSORB AND TRANSPORT SOIL MOISTURE FROM BEYOND THE ROOT ZONE TO PLANT ROOTS
- IMPROVED TOLERANCE TO STRESS
- GREATER RESISTANCE TO DROUGHT

TECHNICAL SPECIFICATIONS OF MYCORRHIZA BIOFERTILIZER

- 2,40,000 SPORES / 100 GRAMS (FCO GRADE 100 SPORES / GRAM)
- 100 GRAMS / ACRE DOSAGE
- MIX WITH 200 KGS MANURE OR COMPOST AND BROADCAST BEFORE SOWING
- CAN ALSO BE DELIVERED VIA DRIP IRRIGATION
- SUITABLE FOR MOST CROPS
- DO NOT USE WITH FUNGICIDES

BENEFITS OF WORKING WITH INGRESS BIO

- Scientifically developed and proven products
- Scientific and Technical staff
- White labelling of all products
- Help you grow your organic inputs vertical
- Comfortable working under Non-Disclosure Agreement (NDA)
- Clear and transparent terms
- Technical support and hand holding



THANK YOU!



INGRESS BIO
SCIENCE FOR SOIL

INGRESS BIO

**306 TAPAS ELEGANCE, NEHRUNAGAR CIRCLE,
AMBAWADI, AHMEDABAD 380015**

CONTACT: 93274 30908 | 75730 90808